

NEWSLETTER

St Francis Catholic Primary School

Mission Statement

"Providing a catholic education
that develops the whole person"

Vision Statement

"To provide challenges for all students
enabling them to develop as well rounded
individuals and socially responsible
catholics"



2 Montrose Street, Pt Chevalier, Auckland
PO Box 44177
T 09 846 4696
E office@stfrancis.school.nz

stfrancis.school.nz

The first week of Advent: Dear Jesus, you are the hope in our messy world. This Advent, help us slow down, listen to your voice, and focus on what's really important. We place our hope in you as we prepare our hearts to celebrate your birth on Christmas, Amen.

The Candle of Hope - Color: Purple. Purple is the primary color associated with Advent. Within the Catholic Church it symbolizes penance, preparation, and sacrifice. During the first week of Advent, we look forward to Jesus' coming with hope.

Update on Important Safety Message from last week: The incident where our neighbours had to deal with an "unwelcome intruder" last week has resulted in the "intruder" being trespassed from the house and from our school grounds. The Police have suggested we continue to remain vigilant with the safety of our children. I would suggest that for the rest of the year you do not drop your children off at school prior to 8:00 am and do not leave them waiting, unsupervised after school. We also recommend that children do not use the walkway path at the bottom of Montrose Street unless they are accompanied by an adult. We need to work together to protect our precious children. If you have any questions or concerns please come and see me directly, Lisa Bateman.



Uniform: Please consider donating your old St Francis uniforms to our second hand uniform collection, particularly from our Year 6 leavers who will no longer need their uniforms. We have lots of families wanting to purchase second hand uniforms but there's not a lot of stock!

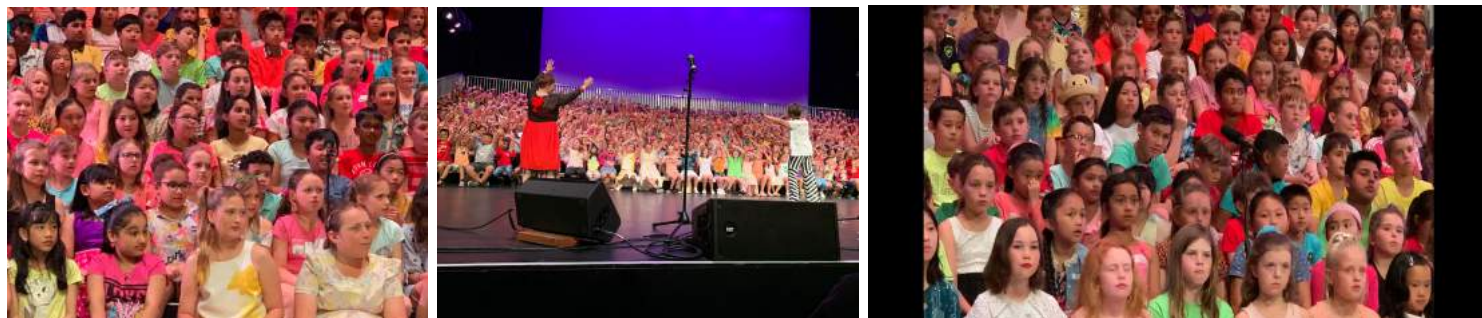
Message from the St Francis Library: All books need to be back by the end of Week 8, Friday Dec 6. Stocktake begins Week 9. Please see Mrs Mahoney if you have any problems with Library Books.

Year 6 Beach Education Trip to Muriwai Beach:



Nativity Walking School Bus: On the morning of Friday the 13th of December we will be having a Nativity Walking School Bus, to and from Walker Park. Start getting your Nativity costume ready!!! I am looking forward to seeing children walking along the road dressed as angels, shepherds, wise men etc.

Kids 4 Kids Choir at the Bruce Mason Center:



Inner City Sports Cluster Athletics Competition:





Back to School
made easy

OfficeMax[®]
MySchool

Earn
SCHOOL
REWARDS
for our school*

Our school stationery lists are
already online at **myschool.co.nz**

*Conditions apply. See myschool.co.nz for details

Order
The Easy
Way

myschool.co.nz
OfficeMax Stores
0800 724 440

Free Delivery For orders over \$46*

Dates for 2020: The Government has announced that they are “gifting” all primary and secondary schools with 8 Teacher Only Days over the next 3 years. The purpose of these days are for teacher professional development and to reduce workload. The Board of Trustees has chosen to spread these days out over the 3 years, at times that are more convenient to families e.g. attached to long weekends or school holidays. These are the tentative dates for 2020: Friday 6 March 2020, Tuesday 2 June 2020 - Queen’s Birthday Weekend, Friday 23 October 2020 - Labour Weekend.

Year 1 and 2 Trip to the Park:



Coming up this term:

Wednesday 4 December and Thursday 5 December - Y0,1, 2 Beach / Playground Trip

Friday 6 December - New Children Welcome Assembly at 2.15pm, Year 6 leaver / parent Mass and Dinner

Friday 13 December - Nativity walking school bus, End of Year Reports go home

Monday 16 December - Parent Open Classroom Afternoon (to ask questions about reports) 3.00pm - 4.30pm

Tuesday 17 December - Visit 2020 classes

Wednesday 18 December - Visit 2020 classes

Thursday 19 December - Prizegiving Mass at St Benedicts 6.00pm

Friday 20 December - Last day of school, Nativity play, School finishes at 1pm-ish



Lisa Bateman lisab@stfrancis.school.nz or principal@stfrancis.school.nz



www.sellrealestate.nz

Professionals
Sell Real Estate Ltd Licensed REAA 2008

Over 1000 sales in Westmere, Grey Lynn, Pt Chevalier, Mt Albert & Waterview.
Over \$1 billion worth of sales. Over 70 years combined experience selling Real Estate in the central Auckland suburbs. Awarded #1 team in Australasia 2019.
\$1000 donated for every sale - just mention this ad.

Lawrence von Sturmer, Derek von Sturmer, Jo de Beer, Xenia Marcroft & Ross Brader
Contact us on 09 846 8996 or 0800 SELLING



www.pform.nz

0800 736 766

DRAMA / HIP-HOP / SINGING

KUMON Mt Albert Math & English

- Calculation and reading ability
- Concentration
- A daily study and reading habit
- The confidence to learn independently

Mt Albert Senior Citizen Hall, 1 Wairere Avenue, Mt Albert
Phone: 638 8830 www.kumon.co.nz
Mob: 021 263 9919 Email: kumonmtalbert@hotmail.com



Veterinary Care™ Point Chevalier

Point Chevalier Veterinary Care
67 Pt Chevalier Road
Pt Chevalier Auckland 1022

Phone: 815 0696 Fax: 815 1753

www.pointchevaliervets.co.nz

Your local mortgage expert.

Loan Market

"For every mortgage settled \$150
and for every re-fix \$50 will be
donated to the school."

027 687 5784
cameron.marcroft@loanmarket.co.nz
loanmarket.co.nz/central



"Your Friendly" Electrician PANCH ELECTRICAL

PO Box 44 117, Pt Chevalier
WEB SITE: www.panch.co.nz
EMAIL: electrical@panch.co.nz
AFTER HOURS: 846 7674



CALL MICHAEL 021 654 999



NEW DIMENSION HOMES

Residential alterations, additions, renovations and new builds

Louis Taylor | Managing Director
021 836 065

build@ndhomes.co.nz | www.ndhomes.co.nz

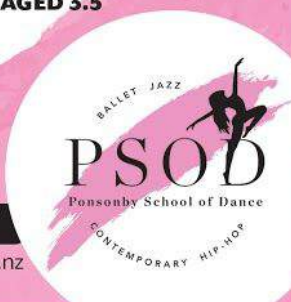
CLASSES FOR CHILDREN FROM AGED 3.5

We offer classes in:

- Royal Academy of Dance Ballet
- Jazz • Contemporary • Hip Hop
- Musical Theatre
- From aged 3.5 and upwards

Call Tracey on **027 533 8427**

tracey@ponsonbyschoolofdance.co.nz
28 Hargreaves St, Ponsonby



Gymnastic Classes

- Gymnastics for children aged 2 - 15
- Holiday programmes
- School programmes
- Birthday Parties
- Free-Play, Hobsonville

For enquiries or to register: www.gymkids.co.nz

Contact us on 09 951 0355 or 09 416 0003 | Email: admin@gymkids.co.nz

Ponsonby | Hobsonville | Te Atatu Peninsula



**They consistently
deliver a superior
service standard**

Join the
Winners
Circle

Our commitment is to continue to
protect & grow our client's investments.
Call to discuss how we can help.

**Property
Management**

Residential ▾ Commercial

GOODWINS

0800 GOODWINS
goodwins.co.nz